

Course Registration Details

Course options and fees

The additional \$30 fee includes \$10 per day for lunch, morning and afternoon tea for the 3 days

Undergraduate \$850 + \$30 (\$880)

Graduate \$950 + \$30 (\$980)

Masters of Theology \$1100 + \$30 (\$1130)

* Audit \$295 + \$30 (\$325)

*Concession \$195 + \$30 (\$225)

FEE-HELP AVAILABLE

Registration details:

Please register for the course by contacting the Registry at The Broken Bay Institute to request a course unit registration form. Contact details below:

The Registry Office
The Broken Bay Institute
PO Box 340
Pennant Hills NSW 1715
Email: registrations@bbi.catholic.edu.au
Tel: 61 2 9847 0030 Fax: 61 2 9847 0031

For accommodation costs and bookings see reverse

Special Consideration

The fees for MSC or OLSH (professed or lay), those in MSC Parishes and those working in MSC or OLSH Colleges or ministries, seeking to audit this course are noted below.

Professed MSC or OLSH
\$120 + \$30 (\$150)

Those in MSC / OLSH Colleges, Parishes & other ministries
\$200 + \$30 (\$230)

The additional \$30 fee includes \$10 per day for lunch, morning and afternoon tea for the 3 days

Anyone eligible for special consideration wishing to enrol should contact Julie Taylor at Chevalier Institute.

julietaylor@chevaliercentre.org

WHERE AND WHEN?

The course is offered once in 2009 in seminar mode*

Fri 21st - Sun 23rd August 2009

Each day will run from 9am - 5pm.

Venue:

Chevalier Resource Centre
1 Roma Avenue Kensington NSW

“Before you speak, it is necessary for you to listen, for God speaks in the silence of the heart.”
(Mother Theresa)



Chevalier Institute
is a ministry of the
Missionaries of the Sacred Heart.

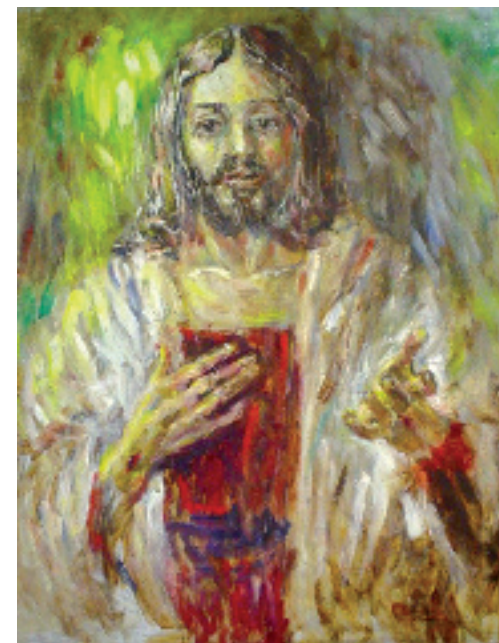
The Broken Bay Institute is a Member Institute of the Sydney College of Divinity and teaches its awards.
*This optional seminar compliments BBI's distance unit.

Broken Bay Institute



Unit of Study

SPIRITUALITY OF THE HEART



Chevalier Resource Centre
Kensington NSW

**21st - 23rd August 2009
Kensington NSW**

Conducted by
Chevalier Institute,
in conjunction with
The Broken Bay Institute (BBI)

BBI Course SP309 /SP509
SEMINAR MODE*

“It is only with the heart
that one can see rightly.
What is essential is invisible to the eye.”
(Antoine de Saint Exupery)

SPIRITUALITY OF THE HEART

In contrast to theology, we speak of spirituality as practical. It focuses a way of Christian living.

It is also practical in that it insists on ‘groundedness’ - an engagement with suffering and resistance to the causes of injustice.

A spirituality of the heart attends to the movements of one’s own heart and to the movement within one’s relationships, including the Eternal Relationship within all human relationships. A spirituality of the heart of Jesus perceives Jesus’ healing and teaching as emerging from his compassion, from the sensitivity of his heart. It sees Jesus’ love as motivating all his ministry, and his willingness to be sacrificed for us (the suffering servant).

Come and join us on a journey to the heart.

COURSE DETAILS

This course is designed for...

- Undergraduate and graduate students already undertaking courses of study
- Teachers and RE coordinators
- Pastoral Associates and Lay leaders
- Catechists and RCIA ministers
- Parish Pastoral Council members
- Members of Religious Institutes founded in the Sacred Heart tradition
- Anyone interested in heart spirituality

A book of readings will be provided in advance of the course...

Each three-day course will include...

Prayer, reflection and sharing, in order to touch into the religious experience (the mystery of “heart”) that underpins a Spirituality of the Heart.

A study of the scriptural, historical and theological foundations of the Spirituality of the Heart.

Exploration of contemporary understandings and expressions of Spirituality of the Heart (cf. relationship, contemplation, embodiment, woundedness, creativity, peace and justice), including the role of Mary in this spiritual tradition.



This course offers the opportunity to...

- gain a sound understanding of the religious experience that is at the foundation of the Spirituality of the Heart.
- develop knowledge of the scriptural expressions, theology and history of the Spirituality of the Heart.
- integrate the key elements of Christian spirituality and spiritual growth in terms of a Spirituality of the Heart.
- reflect upon social, political and cultural issues through the lens of Spirituality of the Heart.
- appreciate how the Spirituality of the Heart can be integrated into personal life and social action.

Course presenters/facilitators...

Frank Andersen msc, Fr Brian Boyle, Michael Fallon msc, Sr Marie Farrell rsm, Frank Fletcher msc, James Maher msc, Claude Mostowik msc, John Rate msc and Julie Taylor

Accommodation...

Accommodation is available at the Chevalier Resource Centre. Please book your accommodation through Julie Taylor:

Ph: 02 9315 2299

Fax: 02 9662 8562

Email: julietaylor@chevaliercentre.org

Accommodation fees...

Rooms \$55 per night

Extra meals (i.e. breakfast or dinner)

\$10 per meal

All meals must be booked 14 days in advance.

Please note that lunch is included in the course fees.



“Return to the heart;
see there what you can learn about God,
for the image of God is there.
In the interior person dwells Christ; in the interior
person you are renewed after God’s image...”
(St Augustine)